

Boost your Wi-Fi signal and coverage with additional pods

For best results, we recommend a Wi-Fi pod on every floor; call us today to add additional pods.

Follow these easy steps to set up your additional Wi-Fi pod(s):

1. Place the additional Wi-Fi pod where you want it and plug it into a power outlet.
2. When the light on the bottom of the Wi-Fi pod is solid green, your additional pod is now connected to your Wi-Fi network. This can take up to 5 minutes.

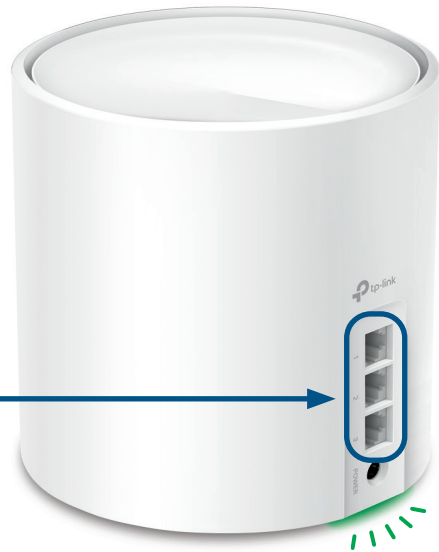
Connecting Wired Devices

Each Wi-Fi pod is equipped with three ethernet ports

Your modem will take one port on your main Wi-Fi pod. The second port can be used to connect a nearby device.

For example:

- Gaming Console
- Computer



For general support for your Internet, or for additional self-help resources:



Visit supportinternet.bell.ca



Call 1 866 709-6079

Bell

230808 Bell TC4400/TC4350 Modem and Deco Wi-Fi 6 Pod Set Up Guide E

Bell

Cable Internet Modem & Wi-Fi Pod Set Up Guide



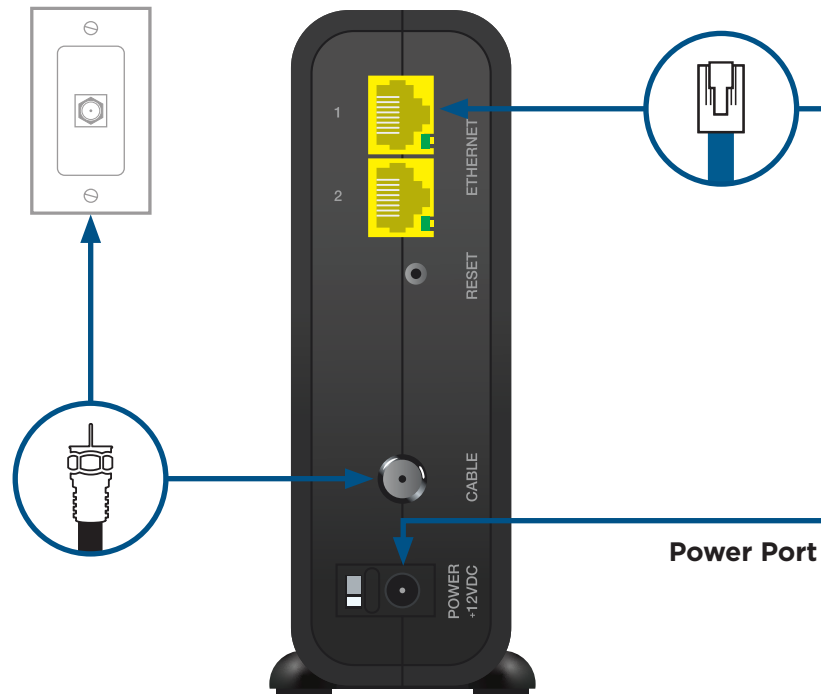
Setting up your high speed cable Internet service and Wi-Fi network.



Begin your Wi-Fi set up after your technician visit is complete or after your scheduled activation date and time.

Step 1 - Connect modem to cable outlet

Connect one end of the coaxial cable to the cable port on your modem and the other end to the cable jack.

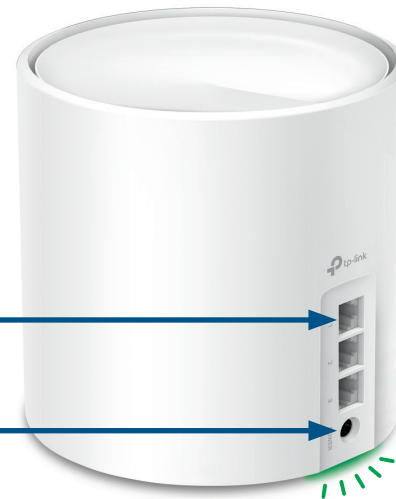


Step 2 - Connect and power your devices

Connect one end of the ethernet cable to LAN port 1 of your modem and the other end to any port on your Wi-Fi pod.

Plug the power supply for your modem and Wi-Fi pod into a power outlet.

The light on the bottom of the Wi-Fi pod should proceed from yellow to blue, then remain steady on green. This can take about 5 minutes.



Step 3 - Connect to Wi-Fi

Go to Wi-Fi settings on a device you would like to connect, and search for available Wi-Fi networks.

Select the Wi-Fi Network (SSID) and enter the password that matches those found on the bottom of your Wi-Fi pod.

Download the TP-Link Deco app to manage your service.



- Customize your Wi-Fi name and password
- Parental controls
- Anti-virus
- Create a separate network for guests

⚠ If the light is red, reboot the modem and Wi-Fi pod by unplugging the power adaptors.

Wait 30 seconds, then plug back in the modem. Wait another 30 seconds, and plug in the Wi-Fi pod.

That's it! you should now be ready to enjoy your Bell cable Internet.